

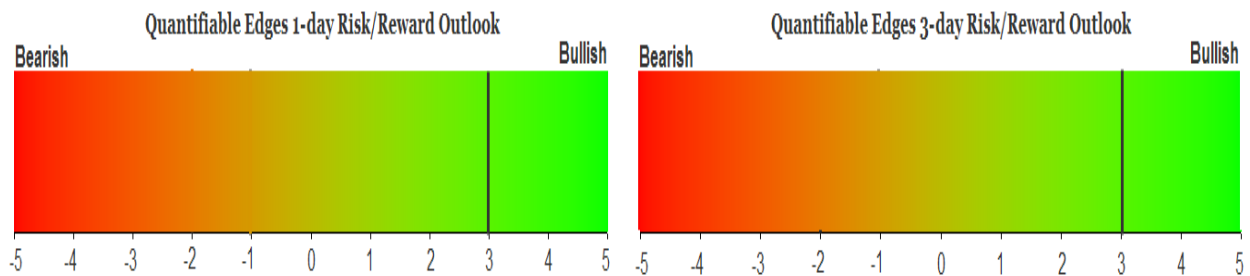
QUANTIFIABLE EDGES SUBSCRIBER LETTER

ASSESSING MARKET ACTION WITH INDICATORS AND HISTORY

December 30, 2025

Volume 18 Issue 248

Market Overview



Signals Overview

Aggregator	CBI Reading
Long	0

Tonight's Research Points

- After 2 days pulling back, SPX could be set up for a Turnaround Tuesday.

Short-term Outlook

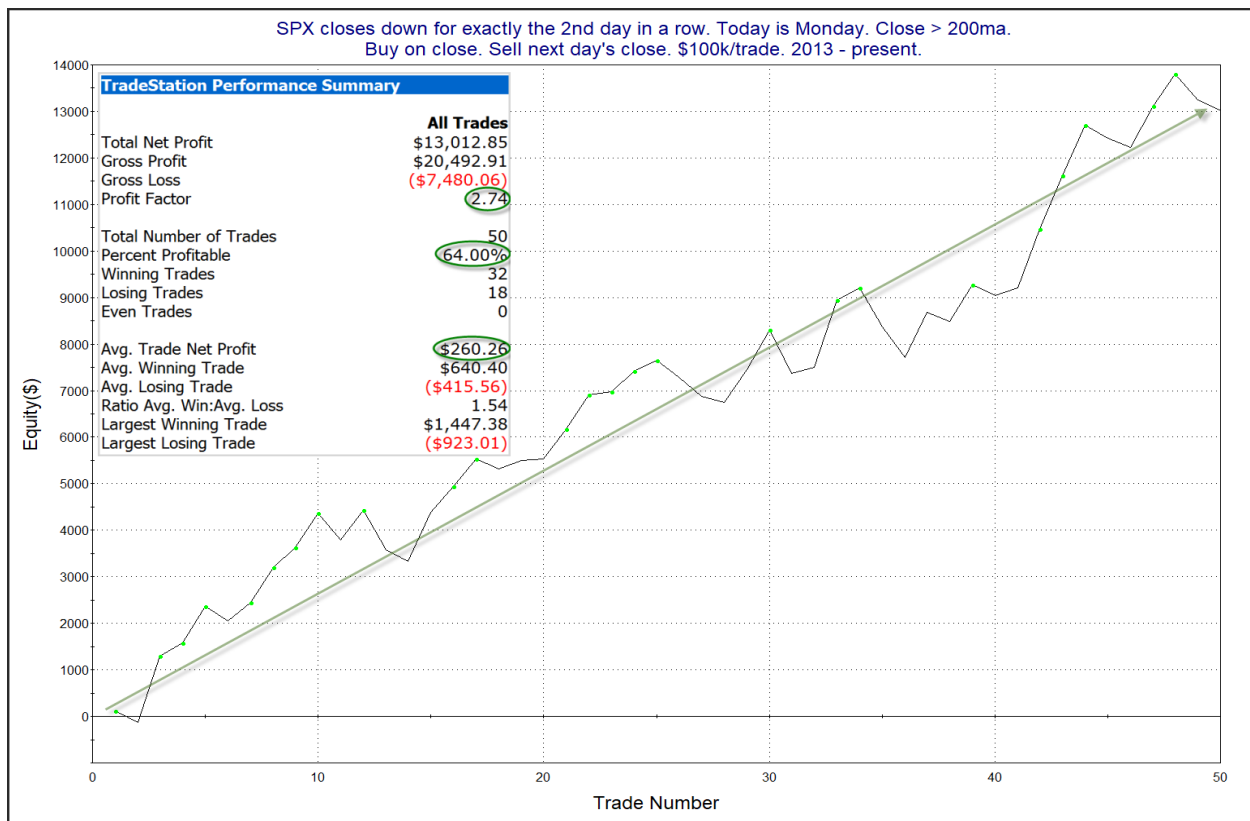
The Bottom Line

The Aggregator is bullish. Reward/risk appears favorable for the long side.

The Evidence

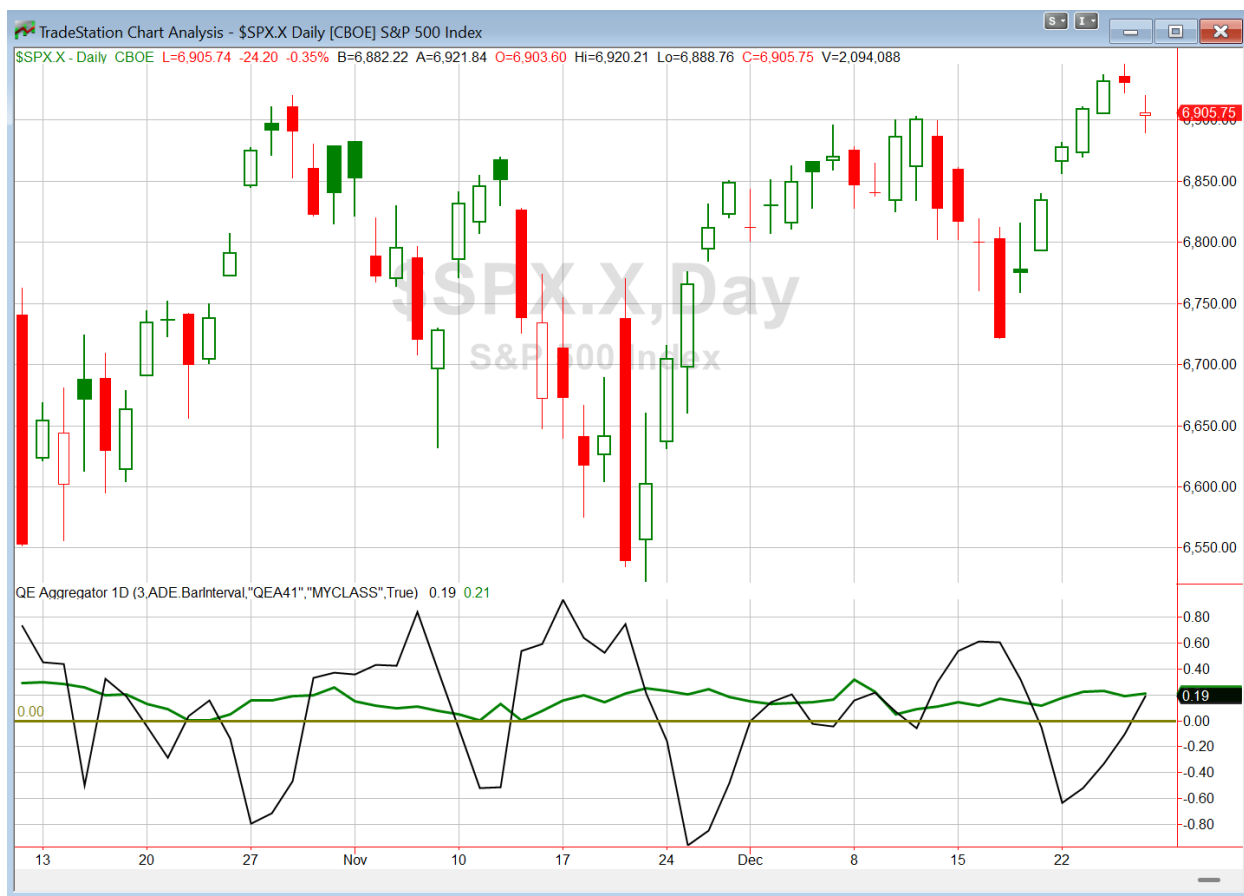
Monday saw the major indices finish lower. SPX closed down 0.35%, the NASDAQ dropped 0.5%, and the Russell 2000 declined 0.6%. Breadth was weak as the NYSE Up Issues % closed at 37% and the NYSE Up Volume % posted a 42% reading. NYSE total volume rose some from Friday's level.

I have written a substantial number of times about "Turnaround Tuesday". Over the years Tuesday has exhibited the strongest proficiency for the market to reverse a pullback of any day of the week. But in the case of 2-day pullbacks, which are quite short, they were not terribly consistent prior to 2013. The study below was seen in the 12/16/25 letter. Parameters look for 1) SPX to decline exactly 2 days in a row, 2) today is Monday, and 3) SPX closes above its 200ma. Results are updated.



The stats and the persistent upslope of the profit curve are impressive. I have included this study on the active list tonight as a potentially bullish edge.

I have updated the Aggregator chart below.



With tonight's evidence considered, the green Aggregator Line remained above zero. Positive readings mean net expectations are for upside over the next few days. Meanwhile the black Differential Line rose above zero. The positive Differential Line reading means that SPX is oversold versus recent expectations. So expectations are positive and SPX is oversold. This is considered a bullish configuration. Bullish configurations are visible on the chart whenever both lines close above zero. Therefore, the Aggregator formation turned bullish at the close.

Based on the current list of active studies, expectations are set to remain positive on Tuesday. This is unlikely to change. Meanwhile, the Differential Pivot will be 6976.05. That is 1.0% above Monday's close. Therefore, SPX will need to close up at least 1% on Tuesday in order to flip from oversold to overbought versus recent expectations.

So the Aggregator is now bullish. There are a fair amount of studies that have emerged over the last several days that are pointing higher. And with the Differential Pivot 1% above Monday's close, there is some room to the upside before SPX would turn overbought. So reward/risk appears favorable. I like the long side. I may look to take on some long index exposure on Tuesday if I can get a favorable fill.

*Intermediate-term Outlook (2 weeks – 2 months) – updated 12/29 – **bullish***

Catapult and Capitulative Breadth Statistics

[Catapult & CBI Presentation Link](#)

Open Catapult Triggers

None

Broad Market Large Cap CBI – 0

Additional New Trade Ideas

SPY – Buy ¼ index position @ \$687.85 LIMIT. Based on the short-term outlook above, I will look to start building a long index position if I can get filled at Monday's closing price or better.

Current Open Trade Ideas

None

DISCLAIMER: PAST PERFORMANCE, WHETHER ACTUAL OR TESTED, DOES NOT GUARANTEE FUTURE RESULTS, PROFITABILITY, OR CORRELATION TO ANY LISTED SECURITY OR TRADE IDEA.

This publication is produced by Quantifiable Edges, LLC (QE), and is intended solely for informational and educational purposes. It is a regularly issued impersonal financial research commentary, and should not be construed as personalized investment advice, a solicitation to buy or sell securities, or a recommendation tailored to any individual's financial circumstances. Data provided by Tradestation and Norgate Data. The information presented herein is believed to be accurate at the time of publication, but QE makes no representation or warranty as to its completeness or reliability. Opinions, data and analyses are subject to change without notice. Readers are encouraged to conduct their own due diligence and consult with a qualified financial professional before making investment decisions. There is a high degree of risk in trading and simulated performance results have certain inherent limitations. Unlike an actual performance record, simulated results do not represent actual trading or the results of a specific account or group of accounts. Because these trades may not have been executed, results could misrepresent the effects of market factors like liquidity. Simulated trading programs in general are also subject to the fact that they are designed with the benefit of hindsight. No representation is being made that any account will or is likely to achieve results like those shown. QE, its officers and employees do not accept responsibility for any direct or consequential loss resulting from the use of this information.

Mr. Robert Hanna, author of the publication, is separately affiliated with Eastsound Capital Advisors, LLC (ECA), doing business as Capital Advisors 360. ECA is registered as an investment adviser with the Securities and Exchange Commission (SEC). ECA provides individual client services only in states in which it is filed, or which an exemption or exclusion from such filing exists. Registration with the SEC does not imply a certain level of skill or training. Although ECA clients utilizing the approaches developed by Mr. Hanna incidentally receive the QE Gold Subscription at no charge, ECA does not sponsor, endorse or validate its content. Mr. Hanna and/or his clients may hold positions in securities (including derivatives) mentioned herein; however, such holdings are not intended as endorsements and may change without notice and/or differ from published study indications at the sole discretion of Mr. Hanna. No part of this publication may be reproduced, redistributed, or republished without prior written consent from QE.

Copyright © 2025 Quantifiable Edges, LLC.